

# **Pathways & Transition to Secondary Education Infopack for P6 Parents 2022**

**Information on Secondary School Options and  
Direct School Admission (DSA)**





## Transition from Primary to Secondary Education

As your child approaches the final lap of Primary education, you can partner us in supporting his/her preparation to transit to Secondary education.

This Infopack will help you better understand:

- ***The different types of secondary schools and how they offer different ways for students to develop in various talent areas; and***
- ***The pathways available for all P6 students to move on to secondary education.***

This will help you discuss with your child to plan ahead for transition to Secondary education, through one of these two pathways:

- **Direct School Admission (DSA-Sec) Exercise** in May 2022; or
- **Secondary 1 (S1) Posting Exercise** in Nov 2022 (after release of PSLE results)

If your child is keen on further developing a specific area of passion, talent or interest in secondary school, this Infopack will also guide you in participating in the first of two pathways to Secondary education – the **Direct School Admission (DSA-Sec) Exercise** in May 2022.





## Choosing a Suitable School for Secondary Education...

### Personal Considerations

- What are the strengths, interest and learning style of my child?



### Academic Considerations

- Based on my child's academic readiness, will he/she be able to benefit from the school's academic programmes?

### School Considerations

- Does the school offer niches programmes or CCAs which will bring out the best in my child?
- How will my child commute to the school?





## Choosing a Suitable School for Secondary Education...

There are **different types of secondary schools**, with each school offering **unique distinctive programmes and educational experiences** for your child's development.

These include **Applied Learning Programme (ALP), Learning for Life Programme (LLP), research-based programmes** and other signature programmes that enrich your child's development. Some even offer **customised programmes with industry-focused modules**.

P6 students may seek admission to secondary schools for Secondary 1 through the following 2 pathways:

- **DSA-Sec Exercise (May 2022)**
- **S1 Posting Exercise (Nov 2022)**



### Personal Considerations

- What are the strengths, interest and learning style of my child?

### Academic Considerations

- Based on my child's academic readiness, will he/she be able to benefit from the school's academic programmes?

### School Considerations

- Does the school offer niches programmes or CCAs which will bring out the best in my child?
- How will my child commute to the school?





# Choosing a Suitable School for Secondary Education...



## Mainstream Schools

- Offers Subject-Based Banding to meet each child's readiness level
- Niche programme in every school for child to flourish in passion

### Personal Considerations

- What are the strengths, interest and learning style of my child?

## Specialised Schools



- Focus on hands-on learning and practical knowledge
- Training to prepare students for skills certification

### Academic Considerations

- Based on my child's academic readiness, will he/she be able to benefit from the school's academic programmes?



## IP Schools

- Integrated Sec and JC education
- Broader learning experiences for academic stretching
- A-levels, or equivalent diploma

### School Considerations

- Does the school offer niches programmes or CCAs which will bring out the best in my child?
- How will my child commute to the school?

## Specialised Independent Schools



- Nurture talent in Math, Science, Technology, Sports or the Arts
- O- or A-levels, or Specialised Diploma





# Choosing a Suitable School for Secondary Education...



## Mainstream Schools

- Offers Subject-Based Banding to meet each child's readiness level
- Niche programme in every school for child to flourish in passion

Majority of Mainstream Secondary Schools offer 3 streams:

- **Express Course** - 4 years, leading to GCE O-Level
- **Normal (Academic)** - 5 years, leading to GCE O-Level
- **Normal (Technical)** - 4 years, leading to GCE N-Level

*From 2024, all secondary schools will offer Full Subject-Based Banding. The Exp, N(A) and N(T) courses will be phased out.*

Each Mainstream Secondary School offers a unique **Applied Learning Programme (ALP)** and **Learning for Life Programme (LLP)**, in addition to niche signature programmes that enrich your child's development. It is important to find a school which offers programmes and/or CCAs which are **in line with your child's strength, interest and learning style.**

*\* Currently, students may already proceed to post-secondary courses through Polytechnic Foundation Programme (PFP) or Direct Polytechnic Programme (DPP) after GCE N-Levels, without having to sit for GCE O-Levels.*

### Personal Considerations

- What are the strengths, interest and learning style of my child?

### Academic Considerations

- Based on my child's academic readiness, will he/she be able to benefit from the school's academic programmes?

### School Considerations

- Does the school offer niches programmes or CCAs which will bring out the best in my child?
- How will my child commute to the school?





## Choosing a Suitable School for Secondary Education...



### Specialised Schools



- Focus on hands-on learning and practical knowledge
- Training to prepare students for skills certification

Specialised Schools offer **customised programmes** for students who are inclined towards **hands-on and practical learning**.

- **Northlight School (NLS);**
- **Assumption Pathway School (APS);**
- **Crest Secondary School; and**
- **Spectra Secondary School**

**Customised programme with industry-focused modules**, in conjunction with ITE and industry:

- Focusing on hands-on learning and practical knowledge
- Preparing students for ITE education towards ITE Skills Certification (ISC)
- Available pathways to apprenticeship and polytechnics for further studies

### Personal Considerations

- What are the strengths, interest and learning style of my child?

### Academic Considerations

- Based on my child's academic readiness, will he/she be able to benefit from the school's academic programmes?

### School Considerations

- Does the school offer niches programmes or CCAs which will bring out the best in my child?
- How will my child commute to the school?





## Choosing a Suitable School for Secondary Education...



### IP Schools

- **Integrated Sec and JC education**
- **Broader learning experiences for academic stretching**
- **A-levels, or equivalent diploma**

The Integrated Programme (IP) provides an **integrated Secondary and JC education** where students can proceed to JC without taking the GCE O-Level Examinations. Suitable for **academically-strong** students to:

- **Benefit from broader learning experiences in academic and non-academic curriculum;**
- **Develop intellectual curiosity; and**
- **Undertake research work with real-world relevance.**

Students can seek admission to the IP in these schools at Sec 1 or at Sec 3. Students under the IP can proceed to sit for the A-Level or equivalent diploma without taking the O-Level.

Students' progress are continually monitored through **school-based assessments** – it is important for students to balance academic rigour with co-curricular pursuits, through positive habits of learning and working well with peers.

### Personal Considerations

- What are the strengths, interest and learning style of my child?

### Academic Considerations

- Based on my child's academic readiness, will he/she be able to benefit from the school's academic programmes?

### School Considerations

- Does the school offer niches programmes or CCAs which will bring out the best in my child?
- How will my child commute to the school?







# Choosing a Suitable School for Secondary Education...



## IP Schools

- **Integrated Sec and JC education**
- **Broader learning experiences for academic stretching**
- **A-levels, or equivalent diploma**

### Personal Considerations

- What are the strengths, interest and learning style of my child?

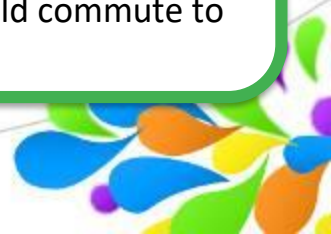
### Academic Considerations

- Based on my child's academic readiness, will he/she be able to benefit from the school's academic programmes?

### School Considerations

- Does the school offer niches programmes or CCAs which will bring out the best in my child?
- How will my child commute to the school?

School	Programme	Length of Programme	JC Partner
Catholic High School	'A' Levels	4 years + 2 years at JC Partner	Eunoia JC
CHIJ St. Nicholas Girls' School	'A' Levels	4 years + 2 years at JC Partner	
Singapore Chinese Girls' School	'A' Levels	4 years + 2 years at JC Partner	
Dunman High School	'A' Levels	6 Years	-
Nanyang Girls' High School	'A' Levels	4 years + 2 years at JC Partner	Hwa Chong Institution
Hwa Chong Institution (Sec)			
National Junior College	'A' Levels	6 Years	-
Raffles Girls School	'A' Levels	4 years + 2 years at JC Partner	Raffles Institution
Raffles Institution (Sec)			





## Choosing a Suitable School for Secondary Education...

### Specialised Independent Schools



- Nurture talent in Math, Science, Technology, Sports or the Arts
- O- or A-levels, or Specialised Diploma

Specialised Independent Schools provide environments for students with an **aptitude for mathematics and scientific inquiry**, an **inclination for applied learning and creativity**, talent in sports, or **creative flair for the arts** to flourish.

- **Singapore Sports School**  
[www.sportsschool.edu.sg](http://www.sportsschool.edu.sg)
- **NUS High School of Mathematics & Science**  
[www.nushigh.edu.sg](http://www.nushigh.edu.sg)
- **School for the Arts (SOTA)**  
[www.sota.edu.sg](http://www.sota.edu.sg)
- **School of Science & Technology (SST)**  
[www.sst.edu.sg](http://www.sst.edu.sg)



### Personal Considerations

- What are the strengths, interest and learning style of my child?

### Academic Considerations

- Based on my child's academic readiness, will he/she be able to benefit from the school's academic programmes?

### School Considerations

- Does the school offer niches programmes or CCAs which will bring out the best in my child?
- How will my child commute to the school?



## Choosing a Suitable School for Secondary Education...

### Specialised Independent Schools



- Nurture talent in Math, Science, Technology, Sports or the Arts
- O- or A-levels, or Specialised Diploma

Students may enrol into Specialised Independent Schools **through DSA based on their talents and strengths** in CCA or niche areas. **PSLE results** may or may not be considered for entry into a Specialised Independent School.

Students who wish to enrol in ***School of the Arts (SOTA)***, ***NUS High School of Mathematics and Science***, or ***School of Science and Technology (SST)***, must participate in the DSA-Sec Exercise as these 3 schools do not offer places through the S1 Posting Exercise.

***Singapore Sports School*** conducts its own admission.

Please visit the schools' website or contact the school directly for more information.



### Personal Considerations

- What are the strengths, interest and learning style of my child?

### Academic Considerations

- Based on my child's academic readiness, will he/she be able to benefit from the school's academic programmes?

### School Considerations

- Does the school offer niches programmes or CCAs which will bring out the best in my child?
- How will my child commute to the school?





# Choosing a Suitable School for Secondary Education...



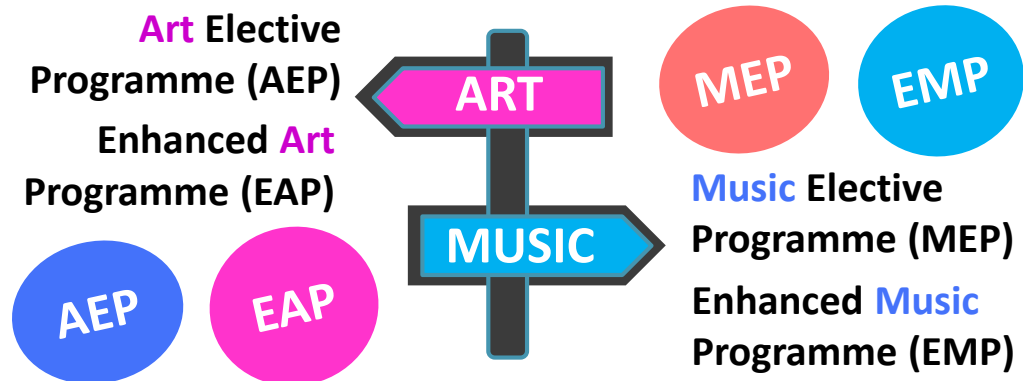
## Schools for Art & Music Talent

- Art Elective Programme (AEP)
- Music Elective Programme (MEP)
- Enhanced Art Programme (EAP)
- Enhanced Music Programme (EMP)

### Personal Considerations

- What are the strengths, interest and learning style of my child?

If your child is interested in developing in **Art** or in **Music**...



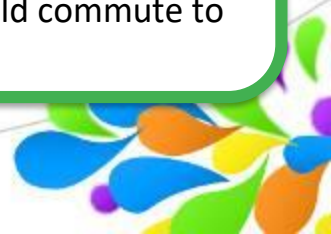
### Academic Considerations

- Based on my child's academic readiness, will he/she be able to benefit from the school's academic programmes?

Introduced by MOE to nurture students with **passion and talent in Art or Music** so that they can **further deepen** their knowledge, skills and appreciation in these areas.

### School Considerations

- Does the school offer niches programmes or CCAs which will bring out the best in my child?
- How will my child commute to the school?





# Choosing a Suitable School for Secondary Education...



## Schools for Art & Music Talent

- Art Elective Programme (AEP)
- Music Elective Programme (MEP)
- Enhanced Art Programme (EAP)
- Enhanced Music Programme (EMP)

### Personal Considerations

- What are the strengths, interest and learning style of my child?

### Academic Considerations

- Based on my child's academic readiness, will he/she be able to benefit from the school's academic programmes?

### School Considerations

- Does the school offer niches programmes or CCAs which will bring out the best in my child?
- How will my child commute to the school?



**4-year programme starting from Sec 1, leading to GCE O-Level \*Higher Art/Music Examination**

- Either enrol in a school that offers AEP/MEP for Sec 1 or apply to AEP/MEP centre.
- Pass Selection Exercise at start of Sec 1.
- Exemption from Design & Technology , and Food & Consumer Education at the lower secondary.



**2-year programme starting from Sec 3, leading to GCE O-Level Art/Music, or \*Higher Art/Music Examination**

- Enrol in a school that offers EAP/EMP for Sec 1.
- Pass Selection Exercise at end of Sec 2, and meet any other criteria set by the school (if applicable).

**\* Higher Art / Music Examination can be used in lieu of a Humanities subject in calculating the L1R5 aggregate for JC admission.**





# Choosing a Suitable School for Secondary Education...



## Schools for Art & Music Talent

- Art Elective Programme (AEP) ←
- Music Elective Programme (MEP)
- Enhanced Art Programme (EAP)
- Enhanced Music Programme (EMP)

### Personal Considerations

- What are the strengths, interest and learning style of my child?

**4-year art programme** offered from **secondary 1** in select schools and NJC AEP centre

- Competent in making and presenting art
- Keen interest and willingness to commit to **4 years of in-depth study** in Art from Sec 1

- For AEP Schools**
- ✓ Gain entry in to AEP schools
  - ✓ Pass AEP Selection Exercise at start of Sec 1



In-depth learning in traditional and new art media, art history & theory

- For AEP Centre @ NJC**
- ✓ Pass AEP Selection Exercise, where you will:
    - Present an e-Portfolio comprising a range of artworks you have done, including works completed during Art lessons/ Art Club sessions.
    - Attend an e-Interview

### Academic Considerations

- Based on my child's academic readiness, will he/she be able to benefit from the school's academic programmes?

### School Considerations

- Does the school offer niches programmes or CCAs which will bring out the best in my child?
- How will my child commute to the school?

Prepares students for the GCE O-Level Higher Art

<https://go.gov.sg/special-artprogrammes>



MEP

## Choosing a Suitable School for Secondary Education...



### Schools for Art & Music Talent

Art Elective Programme (AEP)  
**Music Elective Programme (MEP)**  
Enhanced Art Programme (EAP)  
Enhanced Music Programme (EMP)

#### Personal Considerations

- What are the strengths, interest and learning style of my child?

**4-year Music programme** offered from **secondary 1** in select schools and centres

- Competent in performing and creating music
- Keen interest and willingness to commit to **4 years of in-depth study** in Music from Sec 1



In-depth learning in different musical genres and traditions, music history & theory

#### For MEP Schools

- ✓ Gain entry in to MEP schools
- ✓ Pass MEP Selection Exercise at start of Sec 1, comprising the following:
  - **Listening Test** (25 MCQs based on 6 – 8 Listening Extracts from different musical traditions)
  - **Practical Audition** (2 contrasting pieces/ improvisations on an instrument/voice in any style of a total duration of 5 min)
  - **Aural Test & Interview** (Applicants who have composed music could bring along their scores/recordings for their interview. Please note that this is not a mandatory requirement)

#### Academic Considerations

- Based on my child's academic readiness, will he/she be able to benefit from the school's academic programmes?

#### School Considerations

- Does the school offer niches programmes or CCAs which will bring out the best in my child?
- How will my child commute to the school?

Prepares students for the GCE O-Level Higher Music

<https://go.gov.sg/specialmusicprogrammes>



# Choosing a Suitable School for Secondary Education...



## Schools for Art & Music Talent

- Art Elective Programme (AEP)
- Music Elective Programme (MEP)
- Enhanced Art Programme (EAP)
- Enhanced Music Programme (EMP)

### Personal Considerations

- What are the strengths, interest and learning style of my child?

### Academic Considerations

- Based on my child's academic readiness, will he/she be able to benefit from the school's academic programmes?

### School Considerations

- Does the school offer niches programmes or CCAs which will bring out the best in my child?
- How will my child commute to the school?

## Where are the AEP and MEP Secondary Schools?

AEP	MEP
Zhonghua Secondary School	Catholic High School (Secondary)
CHIJ Secondary School (Toa Payoh)	Raffles Institution
Hwa Chong Institution (High School)	CHIJ St. Nicholas Girls' School (Secondary)
Nanyang Girls' High School	Tanjong Katong Girls' School
Victoria School	Raffles Girls' School
Bukit Panjang Government High	Crescent Girls' School
<i>National Junior College *</i>	Methodist Girls' School (Secondary)
	Temasek Junior College
	<i>Anglo-Chinese School (Independent) *</i>
	<i>Dunman High School *</i>

\* Centre offers programme to Sec 1 students who are not enrolled in any AEP or EAP schools.

\* Centres offer programme to Sec 1 students who are not enrolled in any MEP or EMP schools.





**EAP**

# Choosing a Suitable School for Secondary Education...



## Schools for Art & Music Talent

- Art Elective Programme (AEP)
- Music Elective Programme (MEP)
- Enhanced Art Programme (EAP)** ←
- Enhanced Music Programme (EMP)

### Personal Considerations

- What are the strengths, interest and learning style of my child?

**2-year art programme** offered from **Secondary 3** in select schools

- Passionate in making and presenting art
- Keen interest and willingness to commit to **2 years of study** in Art from Sec 3

- For EAP Schools**
- ✓ Gain entry in to EAP schools
  - ✓ Pass EAP Selection Exercise at end of Sec 2, and meet any other criteria set by the school (if applicable)

Experience collaborative learning with other EAP students through combined schools events and workshops.



Be exposed to specialised art media, equipment and creative processes.

Be equipped with abilities and skills to further their passion in art, design, media & technology.



### Academic Considerations

- Based on my child's academic readiness, will he/she be able to benefit from the school's academic programmes?

### School Considerations

- Does the school offer niches programmes or CCAs which will bring out the best in my child?
- How will my child commute to the school?

Prepares students for the **GCE O-Level Art or Higher Art**

<https://go.gov.sg/special-artprogrammes>



# Choosing a Suitable School for Secondary Education...



## Schools for Art & Music Talent

- Art Elective Programme (AEP)
- Music Elective Programme (MEP)
- Enhanced Art Programme (EAP)
- Enhanced Music Programme (EMP)**

**Personal Considerations**

- What are the strengths, interest and learning style of my child?

**2-year Music programme** offered from **secondary 3** in select schools



- Passionate in performing and creating music
- Keen interest and willingness to commit to **2 years of study** in Music from Sec 3

- For EMP Schools**
- ✓ Gain entry into EMP schools
  - ✓ Pass EMP Selection Exercise at end of Sec 2, and meet any other criteria set by the school (if applicable)

**Academic Considerations**

- Based on my child's academic readiness, will he/she be able to benefit from the school's academic programmes?

**School Considerations**

- Does the school offer niches programmes or CCAs which will bring out the best in my child?
- How will my child commute to the school?

Prepares students for the **GCE O-Level Music or Higher Music**

<https://go.gov.sg/specialmusicprogrammes>



# Choosing a Suitable School for Secondary Education...



## Schools for Art & Music Talent

- Art Elective Programme (AEP)
- Music Elective Programme (MEP)
- Enhanced Art Programme (EAP)
- Enhanced Music Programme (EMP)

### Personal Considerations

- What are the strengths, interest and learning style of my child?

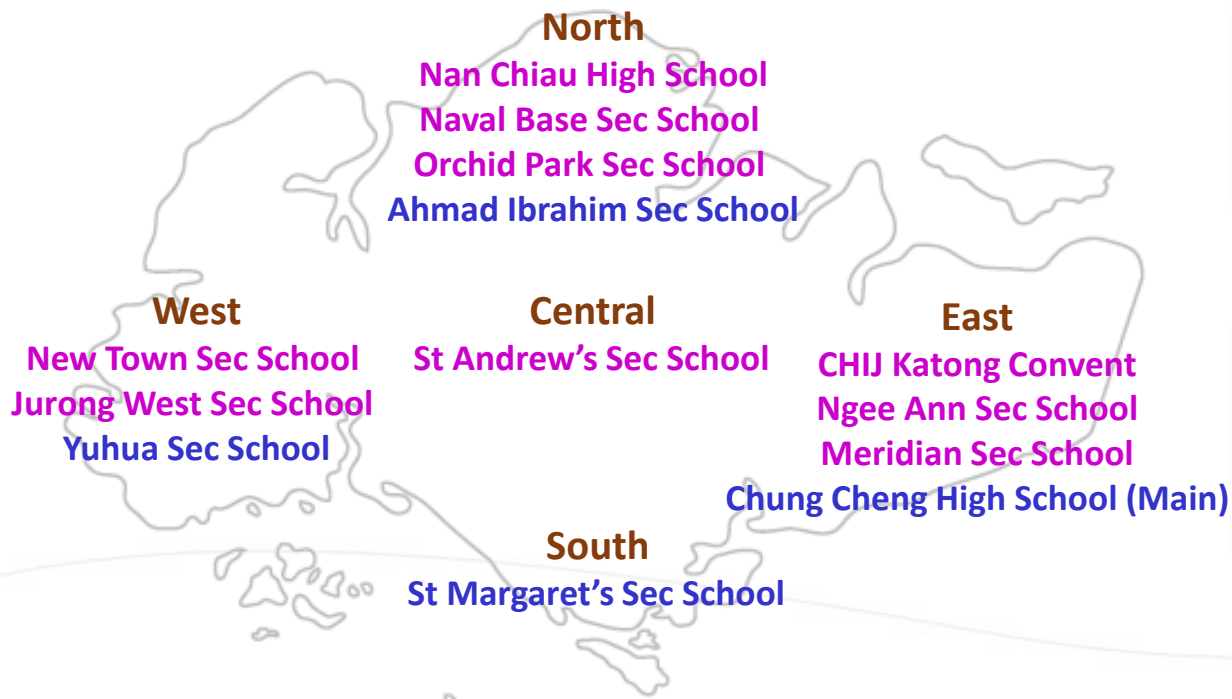
### Academic Considerations

- Based on my child's academic readiness, will he/she be able to benefit from the school's academic programmes?

### School Considerations

- Does the school offer niches programmes or CCAs which will bring out the best in my child?
- How will my child commute to the school?

## Where are the EAP and EMP Secondary Schools?





# Choosing a Suitable School for Secondary Education...



## Schools for Art & Music Talent

- Art Elective Programme (AEP)
- Music Elective Programme (MEP)
- Enhanced Art Programme (EAP)
- Enhanced Music Programme (EMP)

### Personal Considerations

- What are the strengths, interest and learning style of my child?

### Academic Considerations

- Based on my child's academic readiness, will he/she be able to benefit from the school's academic programmes?

### School Considerations

- Does the school offer niches programmes or CCAs which will bring out the best in my child?
- How will my child commute to the school?

## I'm interested! What do I need to do next?

**1** Should I take the 4-year or 2-year programme?



**2** Select schools that offer the AEP/MEP as first choice in the Sec 1 Posting Exercise.

If choice school does not offer special programme, apply for centres through secondary school.

Select schools that offer the EAP/EMP as first choice in the Sec 1 Posting Exercise.

**3** Clear Selection Exercise at the start of the Sec 1 school year.

Clear Selection Exercise at the start of the Sec 1 school year.

Clear Selection Exercise at end of Sec 2.

**4** Begin AEP/MEP lessons from Sec 1, Term 1.

Begin AEP/MEP lessons from Sec 1, Term 2.

Begin EAP/EMP lessons from Sec 3, Term 1.





# Choosing a Suitable School for Secondary Education...



## Schools for Art & Music Talent

- Art Elective Programme (AEP)
- Music Elective Programme (MEP)
- Enhanced Art Programme (EAP)
- Enhanced Music Programme (EMP)

### Personal Considerations

- What are the strengths, interest and learning style of my child?

### Academic Considerations

- Based on my child's academic readiness, will he/she be able to benefit from the school's academic programmes?

### School Considerations

- Does the school offer niches programmes or CCAs which will bring out the best in my child?
- How will my child commute to the school?

## Other considerations...



### Time Management and Commitment

- Commit to the scheduled lesson timings and enrichment activities
- Able to cope with extended lessons, additional projects and assignments

### Distance

- Students enrolled in AEP/MEP Centres would have to travel to the centres for lessons one afternoon a week.
  - National Junior College (AEP Centre)
  - Anglo-Chinese School (Independent) (MEP Centre)
  - Dunman High School (MEP Centre)

❖ Watch a video to have a taster of what EMP and MEP offer:

<https://www.youtube.com/watch?v=B33j0mVWW3g>





## Choosing a Suitable School for Secondary Education...



### Schools for Art & Music Talent

Art Elective Programme (AEP)  
Music Elective Programme (MEP)  
Enhanced Art Programme (EAP)  
Enhanced Music Programme (EMP)

### Information Sheet for Applicants (AEP/ MEP)

#### Art Elective Programme (AEP)

<https://go.gov.sg/secondary-programmes-aep-centres-infosheet>

#### Music Elective Programme (MEP)

<https://go.gov.sg/secondary-programmes-mep-centres-infosheet>

#### Personal Considerations

- What are the strengths, interest and learning style of my child?

#### Academic Considerations

- Based on my child's academic readiness, will he/she be able to benefit from the school's academic programmes?

#### School Considerations

- Does the school offer niches programmes or CCAs which will bring out the best in my child?
- How will my child commute to the school?





How should my child make his/her choices for the S1 Posting Exercise...?



## CHANGES TO PSLE SCORING AND S1 POSTING

RATIONALE...



### NURTURING DIFFERENT ASPECTS OF OUR CHILDREN & REDUCE OVER-EMPHASIS ON ACADEMIC RESULTS

- Reduce fine differentiation at a young age & recognise a student's level of achievement, regardless of how his peers have done.

### REDUCING FINE DIFFERENTIATION

- Prior to 2021: A student who scores 231 and another who scores 230 may be equally ready for sec school.
- From 2021 onwards: Each Achievement Level (AL) spans a range of marks. With ALs replacing T-score, students who perform similarly in the subject will be grouped in the same AL.
- **Choice order of secondary schools will matter more for S1 Posting Exercise, in the event of a tie-breaker.**





How should my child make his/her choices for the S1 Posting Exercise...?



## CHANGES TO PSLE SCORING AND S1 POSTING

### Choice order of schools matter more in posting

- Students will continue to be posted to a secondary school **based on academic merit** i.e. overall PSLE score
- If 2 or more students with the same PSLE Score vie for the ***last available place*** in a school, **tie-breakers** will be used **in the following order**:
  - a) **Citizenship**
  - b) **Choice order of Schools** (NEW for 2021 PSLE cohort onwards)
  - c) **Computerised balloting**







# How should my child make his/her choices for the S1 Posting Exercise...?



## EXAMPLE:

4 students - Jane, Bryan, Mary and John, are vying for the last places in School A and School B.

**Jane**  
Singapore Citizen

JANE'S SCHOOL CHOICES	
1.	School A
2.	...
3.	...
4.	...
5.	...
6.	...

16

**Bryan**  
Singapore Citizen

BRYAN'S SCHOOL CHOICES	
1.	School B
2.	School A
3.	...
4.	...
5.	...
6.	...

20

**Mary**  
Singapore Citizen

MARY'S SCHOOL CHOICES	
1.	School A
2.	School B
3.	School C
4.	...
5.	...
6.	...

20

**John**  
Singapore PR

JOHN'S SCHOOL CHOICES	
1.	School A
2.	School B
3.	School D
4.	...
5.	...
6.	...

20

Students with better scores will be posted first

Jane will be posted first as she has a better PSLE score, and will be posted to School A.

As Jane has taken that last place in School A, Bryan, Mary and John, having the same PSLE score, will vie for the last available place in School B.

**Tie-breaker 1:**  
Citizenship

Bryan and Mary are Singapore Citizens and will have a priority to enter School B.

John will be tie-broken out as he is a Permanent Resident.  
With no places in School B, John will be considered for School D.

**Tie-breaker 2:**  
Choice order of schools

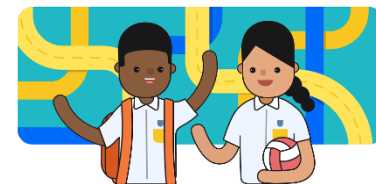
As Bryan ranked School B higher than Mary in his choice order of secondary schools, he will be posted to School B.

Since the last place of School B is taken by Bryan, Mary will be considered for School C.

**Tie-breaker 3:**  
Computerised balloting



# How should my child make his/her choices for the S1 Posting Exercise...?



## CHANGES TO PSLE SCORING AND S1 POSTING

- Indicative Cut-Off Points Ranges for Different School Types

- The indicative AL COPs ranges for school types provide **reference point for suitability**.

### Government &

#### Government-aided schools

#### Autonomous Schools

#### Independent schools

COURSE	INDICATIVE AL COP RANGE FOR 2019 PSLE
Express [Integrated Programme (IP)]	7-9
Express (O-level)	8-22
Normal (Academic)	22-25
Normal (Technical)	26-30

COURSE	INDICATIVE AL COP RANGE FOR 2019 PSLE
Express (IP)	7-9
Express (O-level)	8-16
Normal (Academic)	22-25
Normal (Technical)	26-29

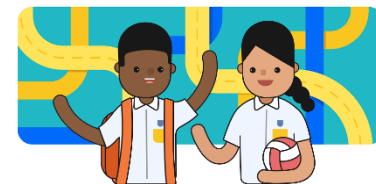
COURSE	INDICATIVE AL COP RANGE FOR 2019 PSLE
Express (IP)	6-8
Express (O-level)	8-10

- MOE will be providing **indicative AL COPs for secondary schools in 2<sup>nd</sup> Quarter 2021**, based on the data from 2020 S1 posting exercise for last year's P6s.
- The **actual cut-off points may differ**, depending on how students exercise their choices that year.





How should my child make his/her choices for the S1 Posting Exercise...?



## CHANGES TO PSLE SCORING AND S1 POSTING

Indicative PSLE Score Ranges for Schools (currently based on 2020 S1 Posting Exercise) are available at:  
<https://www.moe.gov.sg/schoolfinder> and <https://go.gov.sg/exploreschools>

### SchoolFinder Tool



<https://www.moe.gov.sg/schoolfinder>

### MySkillsFuture Portal



<https://go.gov.sg/exploreschools>

### ECG Parent Guide



<https://go.gov.sg/ecg-parentguide>

- **Indicative PSLE Scores for schools** are currently based on 2020 S1 posting exercise.
- The **actual cut-off points may differ each year**, depending on how students exercise their choices that year.

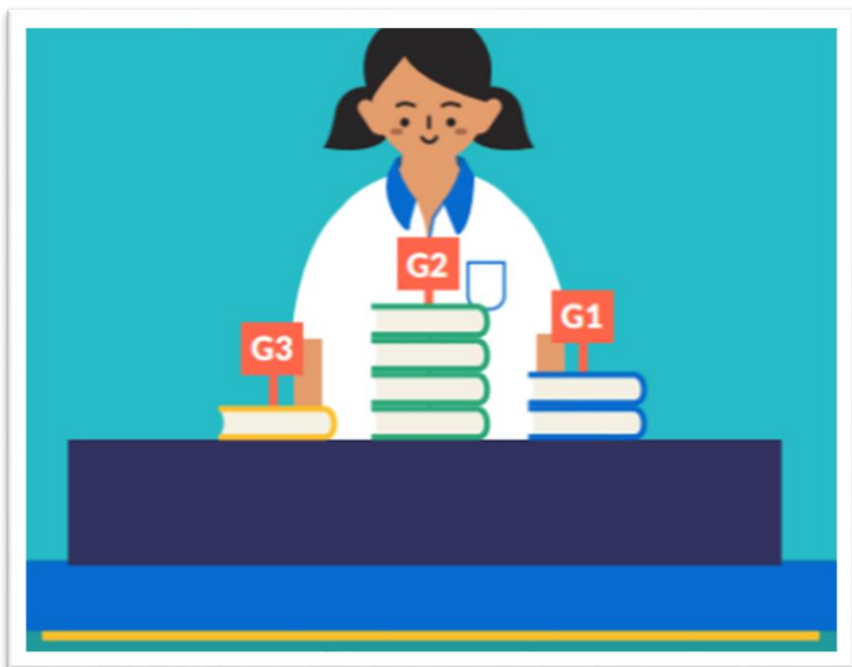




# How should my child make his/her choices for the S1 Posting Exercise...?



## FULL SUBJECT-BASED BANDING (FULL SBB) PILOT



### Full SBB Pilot Schools nearer to Rosyth School

- Ang Mo Kio Secondary School
- Bowen Secondary School
- Deyi Secondary School
- Edgefield Secondary School
- Greendale Secondary School
- Mayflower Secondary School
- Montfort Secondary School
- Paya Lebar Methodist Girls' School (Sec)
- Pei Hwa Secondary School
- Yuying Secondary School
- Hougang Secondary School

*\* This list is non-exhaustive.*

- ✓ From 2020, 28 secondary schools are piloting Full Subject-Based Banding (SBB), available on MOE's SBB Microsite. 11 of them listed above are nearer to Rosyth, which Rosythians may wish to consider.
- ✓ From 2024, all Secondary 1 students will be taking subjects at the G1, G2 or G3 level, based on their PSLE scores in the respective subjects. The Express, N(A) and N(T) courses will be phased out.





**PARTICIPATING IN**  
**DSA-SEC**  
**EXERCISE**



## Should my child participate in DSA-Sec Exercise...?

From 2019, all secondary schools can admit up to **20%** of their Sec 1 non-Integrated Programme (non-IP) intake via the DSA-Sec.

You should consider participating in the DSA-Sec Exercise if your child:

- Is keen on further developing ***a specific area of passion, talent or interest in secondary school***; or
- Wishes to enrol in ***School of the Arts (SOTA), NUS High School of Mathematics and Science, or School of Science and Technology (SST)***, as these schools only participate in the DSA-Sec (and not the S1 Posting Exercise).

All interested students are to **apply for DSA-Sec through a centralised DSA-Sec portal** to all DSA-Sec schools, **except for School of the Arts and Singapore Sports School** which require students to apply directly to the school.

Find out more here: <https://www.moe.gov.sg/secondary/dsa/>



### Personal Considerations

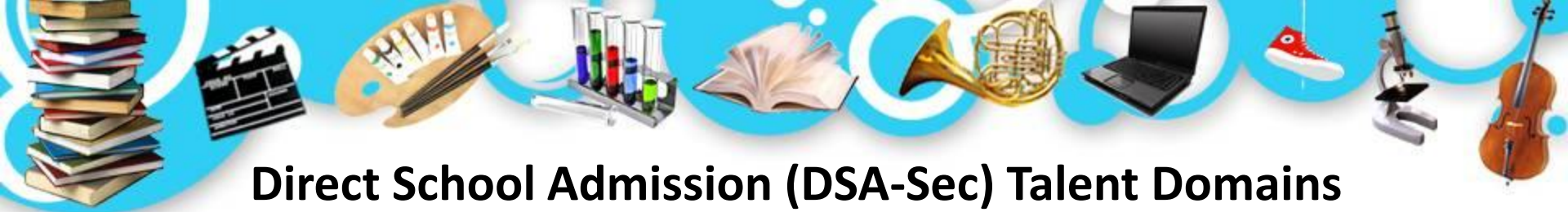
- What are the strengths, interest and learning style of my child?

### Academic Considerations

- Based on my child's academic readiness, will he/she be able to benefit from the school's academic programmes?

### School Considerations

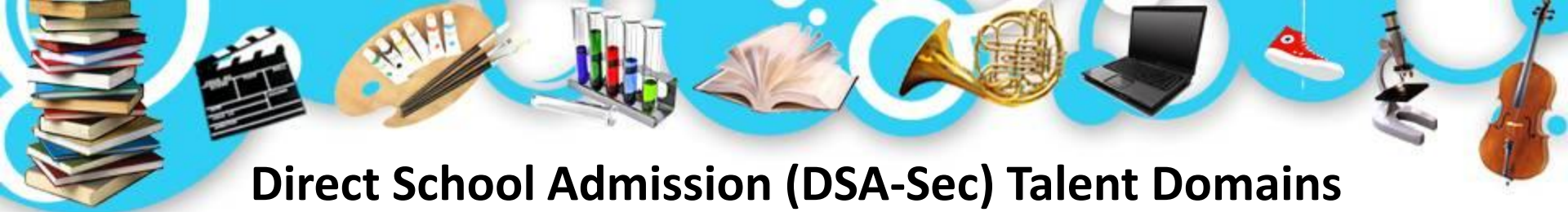
- Does the school offer niches programmes or CCAs which will bring out the best in my child?
- How will my child commute to the school?



## Direct School Admission (DSA-Sec) Talent Domains

S/N	Talent Domains
1	<b><u>Creativity, Entrepreneurship &amp; Innovation</u></b> Programmes in creativity, innovation, business and enterprise (includes social innovation and entrepreneurship).
2	<b><u>Languages &amp; Humanities</u></b> Programmes in debate and public speaking, drama, journalism, and the various languages.
3	<b><u>Leadership &amp; Uniformed Groups</u></b> Leadership programmes and various uniformed groups, such as Scouts, Girl Guides, etc.
4	<b><u>Performing Arts</u></b> Programmes in the various kinds of dance (Chinese, international, etc.), music (choir, band, Chinese Orchestra), and drama in various languages.





## Direct School Admission (DSA-Sec) Talent Domains

S/N	Talent Domains
5	<b><u>Science, Technology, Engineering, Mathematics</u></b> Programmes in robotics, aeronautical engineering and other applied sciences, and specific mathematics and science programmes.
6	<b><u>Sports &amp; Games</u></b> Programmes in the various indoor and outdoor sports, games (e.g. chess), and outdoor adventure.
7	<b><u>Visual Arts &amp; Media</u></b> Programmes in traditional visual arts, such as painting and Chinese calligraphy, as well as photography, videography, journalism, info-communication and digital content creation.





# DSA-SEC EXERCISE PROCESS

**Now to May**

## **Exploring DSA-Sec School Choices**

Schools offer different talent areas and each has its own selection process and schedule. Visit the schools' websites for more information.

**May to Jun**

## **Application**

Once you have explored and shortlisted the schools with your child, submit your child's application online through the DSA-Sec portal.

**Jul to Aug**

## **Selection by Schools & Selection Outcome**

The selection process and timeline differ across schools, and across different DSA-Sec categories. Secondary schools may consider students based on talents and achievements, personal qualities, and primary school results. You are advised to refer to the school's website on the selection process. More details on the DSA selection will be released in May 2022.

Selected students will receive DSA-Sec offers from schools by end-August

**Late Oct**

## **School Preference Submission**

Choose up to 3 school choices in order of preference using the DSA-Sec Portal or in person at child's primary school.

**Late Nov**

## **School Allocation Result Release**

Successful applicants receive DSA-Sec school allocation results along with PSLE results, as with previous years.

# DSA-SEC EXERCISE PROCESS

**Now to May**

## Exploring DSA-Sec School Choices

Schools offer different talent areas and each has its own selection process and schedule. Visit the schools' websites for more information.

Date	Action to be taken
<b>Now till May 2022</b>	<p>Check secondary schools' websites for updated information on DSA categories, selection timeline and criteria:</p> <p><a href="https://www.moe.gov.sg/schoolfinder">https://www.moe.gov.sg/schoolfinder</a></p> <p>Students who are interested in <b>School of the Arts, NUS High School of Mathematics and Science</b> or <b>School of Science and Technology</b> must apply through DSA-Sec:</p> <p><a href="https://www.sota.edu.sg/">https://www.sota.edu.sg/</a></p> <p><a href="https://www.nushigh.edu.sg/">https://www.nushigh.edu.sg/</a></p> <p><a href="https://www.sst.edu.sg/">https://www.sst.edu.sg/</a></p>
<b>May to Jun</b>	<p>Commencement of the DSA-Sec Exercise for application. Login to DSA-Sec Portal via SingPass.</p>

# DSA-SEC EXERCISE PROCESS

Now to May

## Exploring DSA-Sec School Choices

Schools offer different talent areas and each has its own selection process and schedule. Visit the schools' websites for more information.

### Key Considerations

- Choose one or two DSA-Sec schools that are a **good fit for your child**, in terms of the **school's development programmes and academic curriculum**.
- Most importantly, do **remember to also consider your child's passion, strength and academic readiness**.
- Avoid having your child participate in too many tests, interviews or trials just to secure a school through DSA-Sec, that could induce undue stress and take time away from meaningful learning.

# DSA-SEC EXERCISE PROCESS

Now to May

## Exploring DSA-Sec School Choices

Schools offer different talent areas and each has its own selection process and schedule. Visit the schools' websites for more information.

MOE's Schoolfinder online service is available at:

<https://www.moe.gov.sg/schoolfinder>

The screenshot shows the MOE SchoolFinder website. At the top, there is a navigation bar with links for SchoolFinder, CourseFinder, Academic calendar, Self-help tools, and My shortlisted (0). Below this is the MOE logo and a menu with links for Education Levels, Financial matters, Education in SG, News, Careers, and About MOE. A search icon is also present. The main content area shows the breadcrumb 'MOE > SECONDARY >' and the text 'Last Updated: 21 December 2020'. There is a link for 'How to use SchoolFinder'. The title 'SchoolFinder' is prominently displayed, followed by the description: 'Explore a list of schools based on school type, distance and location, and what programmes they offer.' Below this is a search bar with a dropdown menu set to 'Secondary' and a search input field containing the text 'Search for a school or keywords e.g. "Admiralty" or "football"'. A blue 'SEARCH' button is to the right of the search bar. At the bottom, there is a 'Criteria' section with a 'Reset all' link and the text 'Secondary schools'. On the right side, there is a 'Ask Jamie @ MOE' chatbot icon with a photo of a woman and text: 'Ask about P1, S1, JAE, MK, DSA, RS, PSEA, School Fees, SCC'.

# DSA-SEC EXERCISE PROCESS

May to Jun

## Application

Once you have explored and shortlisted the schools with your child, submit your child's application online through the DSA-Sec portal.

Date	Action to be taken
Starting May 2022	<p>All interested students are to apply for DSA-Sec through a <b>centralised DSA-Sec portal to all DSA-Sec schools</b>, instead of individually to each school:</p> <p><a href="https://www.moe.gov.sg/secondary/dsa/application">https://www.moe.gov.sg/secondary/dsa/application</a></p> <p>Students who are interested in <b>School of the Arts</b> or <b>Singapore Sports School</b> should <b><u>apply to the school directly</u></b>:</p> <p><a href="https://www.sota.edu.sg/">https://www.sota.edu.sg/</a></p> <p><a href="https://www.sportsschool.edu.sg/">https://www.sportsschool.edu.sg/</a></p>

# DSA-SEC EXERCISE PROCESS

May to Jun

## Application

Once you have explored and shortlisted the schools with your child, submit your child's application online through the DSA-Sec portal.

### Steps to Take

#### DSA-Sec portal can be accessed using SingPass

Only one parent's SingPass is needed to log in. Refer to the **\* DSA-Sec Portal User Guide** available on the DSA-Sec Portal for detailed instructions.

If you are unable to apply online for your child, you can approach the school for assistance.

#### Maximum choices for each DSA-Sec school

Indicate up to **3 choices and 3 talent areas**. Of the three choices, applicants may use a **maximum of two choices to apply to the same school, for two different talent areas** of that school.

#### Dual-Track School

If a talent area is offered for both the O-Level and Integrated Programme (IP) in a dual-track school, applicants are to indicate a preference for one of the programmes or no preference.

# DSA-SEC EXERCISE PROCESS

May to Jun

## Application

Once you have explored and shortlisted the schools with your child, submit your child's application online through the DSA-Sec portal.



Ministry of Education  
SINGAPORE

## Direct School Admission for Secondary Schools (DSA-Sec) Portal

Application period for 2021 DSA-Sec:

Applicants must submit their applications through the DSA-Sec Portal before 01 June 2021 (3pm). Incomplete or late applications will not be considered.

### Application Process (DSA-Sec Portal)

You are advised to first consider your choice(s) of talent and DSA school, and prepare the information of the non-school based awards/activities (if applicable). This will reduce your application time required. You may use this [template](#) for your preparation.

Login to DSA-Sec Portal

Login via Singpass

By clicking on the <Login> above, you acknowledge that you have read our [Terms of Use](#) and [Privacy Statement](#) and agree to be bound by them.

For applicants using RG Number, please login [here](#)

# DSA-SEC EXERCISE PROCESS

May to Jun

## Application

Once you have explored and shortlisted the schools with your child, submit your child's application online through the DSA-Sec portal.

### Information to Provide:

1. Choice of schools and talent areas (**Indicate up to 3 choices and 3 talent areas**)
2. Contact details
3. Indicate **up to 10 non-school based activities and achievements** which are related to your child's chosen talent areas (**Optional**)

\*Note: You can update, withdraw and re-submit your application during the application period.

### Need **NOT** Submit:

1. Your child's primary school records (e.g. academic results, CCA records, school-based activities, achievements/awards, NAPFA).  
MOE will share information automatically with the DSA-Sec schools.
2. Testimonials from school, which are now **no longer required**.



# DSA-SEC EXERCISE PROCESS

Jul to Aug

## Selection by Schools & Selection Outcomes

The selection process and timeline differ across schools, and across different DSA-Sec categories. You are advised to refer to the school's website on the selection process. More details on the DSA selection will be released in May 2022.

Schools will shortlist students **between July and August**.

- ❑ Shortlisted students will go through a selection process determined by the secondary school.
  - For example, they may be asked to attend...
  - **Interviews, auditions, written evaluations or sports trials, or**
  - **Selection activities held at the secondary school**to assess the specific talent for suitability with the DSA schools. Please refer to the schools' websites for more details on selection process.
  
- ❑ Your child will be informed of the selection outcome by the individual schools by **end-August**:
  - **Confirmed Offer (CO);**
  - Placed on **Waiting List (WL);** or
  - **Unsuccessful.**

# DSA-SEC EXERCISE PROCESS

Jul to Aug

## Selection by Schools & Selection Outcomes

The selection process and timeline differ across schools, and across different DSA-Sec categories. You are advised to refer to the school's website on the selection process. More details on the DSA selection will be released in May 2022.

### Selection Outcomes announced **by end-August**

Your child may receive offers from multiple schools. What do these offers mean?

#### Confirmed Offer

Students given a **Confirmed Offer** are **guaranteed a place in the school**, provided the school offers an academic course – Express, Normal (Academic) or normal (Technical) – which the student is eligible for.

#### Waiting List

Students on the **Waiting List** will be **considered for admission, subject to available vacancies**.

#### Unsuccessful

Unsuccessful applicants for DSA schools will **participate in the S1 Posting Exercise** after the PSLE results are released, in Nov 2021.

If your child has at least one Confirmed Offer (CO) or a Wait List (WL) offer, you will receive email notification via Postman.gov.sg **in late October** to submit up to three school choices, in order of preference.

# DSA-SEC EXERCISE PROCESS

Late Oct

## School Preference Submission

Choose up to 3 school choices in order of preference using the DSA-Sec Portal or in person at child's primary school.

### School Preference Submission

- ❑ Successful applicants will receive **at least one DSA-Sec offer** (i.e. Confirmed Offer or Waiting List Offer).
- ❑ Students with a Confirmed Offer or on a Waiting List will receive a **School Preference Form** from their primary school.
- ❑ Students should submit their preferred choice of schools **in late October**. The form will include instructions on how to submit your child's preferences.
- ❑ Eligible students may indicate **up to 3 school preferences (including SOTA)** via the ***MOE DSA-Sec Online Portal (or in person at their primary school)***.
- ❑ Your child's list of schools and offers will be shown after you log in to the MOE DSA-Sec Online Portal.
- ❑ Refer to the **\* DSA-Sec Portal User Guide** available on the DSA-Sec Portal for detailed instructions.

# DSA-SEC EXERCISE PROCESS

Late Oct

## School Preference Submission

Choose up to 3 school choices in order of preference using the DSA-Sec Portal or in person at child's primary school.

### School Preference Submission

#### For Students with DSA Offer from Singapore Sports School...

- ❑ Some students who receive the DSA-Sec School Preference Form may have received an offer from **Singapore Sports School (SSP)**.
- ❑ If your child wishes to accept the SSP offer, you are **NOT** to submit any school preference through the MOE DSA-Sec Online Portal. If your child submits a school preference, **the SSP offer will be void**. **Students who have an offer from SSP are to participate in the S1 Posting Exercise**, where the SSP place will be allocated as part of the posting exercise.

# DSA-SEC EXERCISE PROCESS

Late Oct

## School Preference Submission

Choose up to 3 school choices in order of preference using the DSA-Sec Portal or in person at child's primary school.

### School Preference Submission

#### Successful Allocation to Secondary School under DSA-Sec

- ❑ Students who have submitted their School Preference Form AND have been successfully allocated to a secondary school via the DSA-Sec Exercise are not allowed to transfer to another school. They are expected to honour the commitment to the allocated DSA school for the entire duration of the programme (i.e. 6 years, if allocated successfully to an IP school).
- ❑ These students are also not allowed to opt for secondary schools during the centralised S1 Posting Exercise.

**Therefore, please consider very carefully with your child before submitting any preference for DSA-Sec offer(s).**

# DSA-SEC EXERCISE PROCESS

Late Oct

## School Preference Submission

Choose up to 3 school choices in order of preference using the DSA-Sec Portal or in person at child's primary school.

### School Preference Submission

#### Withdrawal from DSA-Sec Exercise

If your child no longer wishes to be admitted to secondary school through DSA-Sec, you can withdraw in one of the following ways:

- Do not submit** your child's school preferences
- If you have already submitted your child's school preferences but wish to withdraw, log in to the DSA-Sec Portal to verify and confirm the withdrawal.
- Withdrawal will not be allowed after the School Preference Submission Exercise.** In view of this, please consider carefully before you indicate any preference for the DSA schools offered.

# DSA-SEC EXERCISE PROCESS

Late Nov

## School Allocation Result Release

Successful applicants receive DSA-Sec school allocation results along with PSLE results.

Your child's DSA-Sec allocation results will be released along with the PSLE results **in late November**.

- Collect the results at your child's primary school.
- Successful DSA students will be issued with a **Direct Admission Notification**, informing them of the school that has accepted them.
- These students will **not be allowed** to make any school selection in the centralised S1 Posting Exercise. ***Therefore, please consider very carefully with your child before submitting any preference for DSA-Sec offer(s). DSA is a commitment by the student applying for, and the school making an offer for a place in the school.***

Should your child not secure a place at a secondary school through DSA-Sec Exercise, he/she will join the rest of the P6 cohort in the S1 Posting Exercise in Nov 2021. In the meantime, encourage your child to focus well on enjoying the final lap of his/her P6 learning experience while preparing for the PSLE.

**Remember, don't let your child think that his/her worth is determined by the school he/she gets into. We love them because they are our children 😊**



# **FREQUENTLY ASKED QUESTIONS**



# FREQUENTLY ASKED QUESTIONS

## General Information

### Question 1:

Can my child apply for direct admission to any secondary school? How can I get the list of DSA schools?

### Answer:

Not all secondary schools are participating in the Direct School Admission - Secondary (DSA-Sec). Visit <https://www.moe.gov.sg/schoolfinder> to check for schools participating in the DSA-Sec Exercise. You may also find out more about how DSA works through <https://www.moe.gov.sg/secondary/dsa>.

Parents and students can visit the websites of your shortlisted schools for information on school programmes, e-Open House dates and other details. We will also collate e-Open House details from schools which furnish us with their information, to be published on the P6 Parents Portal periodically.

Students who are interested to enroll in **School of the Arts** and **Singapore Sports School** should apply to the schools directly.

# FREQUENTLY ASKED QUESTIONS

## General Information

### **Question 2:**

Does the DSA mean that students are expected to be good in everything, not just their studies?

### **Answer:**

The DSA seeks to broaden our recognition of talents and achievements beyond academic grades. It presents an opportunity for students with such talents to be directly admitted into a school that can further hone their aptitudes and interests.

However, the DSA is not a pathway that suits every student.

Parents and students should carefully consider the student's strengths and interests, and the ability of the school to develop the student's specific talent, before determining if DSA is an appropriate pathway.

# FREQUENTLY ASKED QUESTIONS

## General Information

### **Question 3:**

Is DSA applicable to students likely pursuing the Normal (Academic) and Normal (Technical) courses, or it is only for students going for IP and Express streams?

### **Answer:**

DSA is not exclusive to IP and Express streams. Students who are likely to pursue the NA or NT courses, **and** have areas of passion, talent or interest they wish to pursue and develop deeper in, are also encouraged to participate in DSA to seek admission to a secondary school which offers suitable programmes to support their growth in these domains.

We encourage all students and parents to adopt holistic considerations, including the child's learning style, dispositions and compatibility with the preferred school's learning environment, before deciding on which schools to apply for.

# FREQUENTLY ASKED QUESTIONS

## General Information

### **Question 4:**

If my child is offered a DSA-Sec place in a secondary school, do they have to meet the schools Cut-off-point for Secondary 1 admission?

### **Answer:**

To be successfully admitted to a DSA school, your child's PSLE results must qualify them for a course the school offers.

**Example 1:** If a school only offers Express Course, your child's PSLE aggregate must at least qualify them for the Express/ Normal (Academic) course option. In this case, they will be admitted to the Express Course in the school.

**Example 2:** If a school offers Express, Normal (Academic) and Normal (Technical) (N(T)) course, your child's PSLE aggregate must at least qualify them for the N(T) course. If your child's course eligibility is N(T), they will be admitted to the N(T) course in the school. The allocated course is based on their course eligibility as determined by the PSLE aggregate and course offered by the school.

# FREQUENTLY ASKED QUESTIONS

## General Information

### **Question 5:**

My child is taking part in Secondary 1 posting. Will my child be deprived of a place in the school by others who were given priority admission through DSA-Sec?

### **Answer:**

As only a certain percentage of places are given for the DSA-Sec, a large majority of students will continue to be admitted based on their PSLE results.

# FREQUENTLY ASKED QUESTIONS

## General Information

### **Question 6:**

Why is there no longer a need for general academic ability tests in DSA admission processes?

### **Answer:**

The general academic ability tests put undue focus on general academic ability, which can be assessed and recognised through the PSLE.

Schools will move away from selecting general academic ability, and towards selecting academic talent in specific areas. This is why schools has stopped using general academic tests for their selection processes by the 2018 DSA-Sec.

Schools may continue to adopt subject-specific evaluations to identify suitable students with achievements and talents in specific academic areas.

# FREQUENTLY ASKED QUESTIONS

## General Information

### **Question 7:**

Without general academic tests, how will schools ensure that chosen DSA students can cope with the demands of both their academic studies and their chosen area of development?

### **Answer:**

Schools will continue to use various sources of information e.g. primary school results, interviews to assess a student's overall ability to cope with its academic and non-academic programmes before making a DSA offer.

Schools participating in DSA-Sec are committed to developing students to their fullest potential in both their studies and areas of talent. This includes providing the necessary learning support needed to ensure all students, whether admitted via DSA or via PSLE results, can cope with the academic programme.

Parents and students are encouraged to choose schools wisely based on the student's aptitudes and strengths, bearing in mind the schools' academic and non-academic requirements, and the programmes available to develop the area of talent.

# FREQUENTLY ASKED QUESTIONS

## Application

### **Question 8:**

How much does it cost to apply for DSA-Sec?

### **Answer:**

DSA-Sec application is free-of-charge.

### **Question 9:**

Can we apply to 3 mainstream schools and 1 specialised school (e.g. SOTA OR Singapore Sports School)?

### **Answer:**

Students are advised to apply for maximum 3 schools for their well-being as numerous DSA shortlisting interviews and tasks may induce stress. Except for SOTA and Singapore Sports School, application for the rest of the schools including NUS High, School of Science and Technology (SST) are through the DSA Portal, which accepts up to only 3 applications.



# FREQUENTLY ASKED QUESTIONS

## Selection Process:

### **Question 10:**

Why is there a need to have separate Selection and School Preference?  
Why can't schools confirm DSA-Sec candidates on their own?

### **Answer:**

Participating schools will issue Confirmed Offers to selected students.

However, as some students may have more than one offer, they will be given the opportunity during the School Preference Submission to submit their preferences. This will enable DSA-Sec places not taken up by students with Confirmed Offers to be given to other students on the school's wait list.

# FREQUENTLY ASKED QUESTIONS

## Selection Process:

### **Question 11:**

How many offers will I receive from a DSA-Sec school if I have applied to two talent areas from the same school?

### **Answer:**

If your child has applied to two talent areas in a school, the school will make only one DSA offer in a specific talent area. The offer will be made based on school's assessment of your child's talent and the school's judgement on which talent area the school can better develop your child in.

# FREQUENTLY ASKED QUESTIONS

## Selection Process:

### **Question 12:**

If students are not successful in any of their applications under DSA-Sec, can they still opt for a school during the DSA-Sec School Preference Submission?

### **Answer:**

Students who are not successful in their DSA-Sec applications will not receive the School Preference Form and cannot opt for any school during the School Preference Submission.

However, you can still select any school of your choice during the centralised Secondary 1 (S1) Posting after the release of PSLE results.

# FREQUENTLY ASKED QUESTIONS

## Selection Process:

### **Question 13:**

When will DSA-Sec schools start inviting my child for interviews / selection?

### **Answer:**

Secondary schools participating in DSA-Sec will have their own specific schedules for selection after the DSA submission period (usually July/August).

Check the detailed schedule of the participating secondary schools by visiting their websites or contacting them directly before the start of the selection.

# FREQUENTLY ASKED QUESTIONS

## School Preference Submission:

### **Question 14:**

My child has received two offers - a Wait List (WL) Offer from School A (my preferred school) and a Confirmed Offer (CO) from School B. Would putting School A as my first choice and School B as my second choice affect my chances with School B?

### **Answer:**

Assuming that your child is eligible for an academic course that School A and School B offer:

#### i. You put School A as 1st choice, followed by School B

If School A has enough remaining DSA-Sec places to admit your child after the other students given CO have made their choices, your child will be allocated School A. If School A does not have enough DSA-Sec places to admit your child, your child will be allocated School B since your child has a CO from School B.

#### ii. You put School B as 1st choice, followed by School A

Since School B is your first choice and School B has given your child a CO, your child will be posted to School B.

# FREQUENTLY ASKED QUESTIONS

## School Preference Submission:

### **Question 15:**

Assuming Candidate A is on the Wait List (WL) in School X and has selected School X as his 1st choice and Candidate B who had been given a Confirmed Offer (CO) in School X opted for the school as 2nd choice, who will be given priority in allocation to School X?

### **Answer:**

Candidate B will be given priority, as he/she has a CO in School X.

# FREQUENTLY ASKED QUESTIONS

## School Preference Submission:

### **Question 16:**

Can I make amendments after the School Preference Submission?

### **Answer:**

Amendments are not allowed after the end of the School Preference Submission.

### **Question 17:**

Can I save my data, log out and continue at another time?

### **Answer:**

When you log out of the MOE online system without submitting the application, the data will not be saved.

# FREQUENTLY ASKED QUESTIONS

## School Preference Submission:

### **Question 18:**

Can I withdraw from DSA-Sec after I have submitted school preferences?

### **Answer:**

You can log on again to the MOE online system to withdraw your submitted school preferences before the end of School Preference Submission.

Withdrawal will not be allowed after the School Preference Submission. In view of this, please be advised to consider carefully before you opt for the DSA schools.

By exercising the school preference, students with both Confirmed and Wait List offer have already agreed to the terms that they are committed to the DSA allocated school.

If successful, they will not be allowed to transfer to another school after the release of PSLE results and participate in Secondary 1 posting.



# FREQUENTLY ASKED QUESTIONS

## School Preference Submission:

### **Question 19:**

Can my child, who has received Confirmed Offer or put on the Wait List by a school, decide not to select the school?

### **Answer:**

Your child can decide whether to select the school during the School Preference Submission in late October.

If they do not submit school preference by the end of the School Preference Submission period, they are deemed to have withdrawn from the DSA-Sec.

They will then be eligible to participate in the centralised Secondary 1 Posting.

# FREQUENTLY ASKED QUESTIONS

## School Preference Submission:

### **Question 20:**

If two candidates are placed on the school's Wait List (WL) and both have indicated the school as their 1st choice, who will be allocated first?

### **Answer:**

The candidate who is ranked higher in the school's Wait List will be allocated first.

The choice order the candidate puts the school during submission does not affect the allocation in such a situation.

# FREQUENTLY ASKED QUESTIONS

## School Preference Submission:

### **Question 21:**

When is the School Preference Submission period? How will my child receive the DSA-Sec School Preference Form? Where do I submit the DSA-Sec preferences?

### **Answer:**

The DSA-Sec School Preference Submission takes place after the Primary School Leaving Examination (PSLE), **in late October**.

Students who are currently studying in MOE schools will receive the DSA-Sec School Preference Form from their primary schools.

DSA-Sec school preference(s) can be submitted either electronically via MOE online system (at no costs) or personally at your child's primary school.

All students have to submit their school preferences by the School Preference Submission period.

# FREQUENTLY ASKED QUESTIONS

## School Preference Submission:

### Question 22:

When will we receive the DSA results? Is there any change from previous years?

### Answer:

Secondary schools will inform students of one of the following selection outcomes by **end-August**.

- Confirmed Offer (CO);**
- Placed on **Waiting List (WL);** or
- Unsuccessful**

Students with a Confirmed Offer or on a Waiting List will receive a **School Preference Form** from their primary school, for them to submit their preferred choice of schools in **late October**.

Students who have been successfully allocated to a secondary school via the DSA-Sec Exercise will receive **the school allocation results together with PSLE results** in **late November**. This is the same as previous years.

# FREQUENTLY ASKED QUESTIONS

## Result Release:

### **Question 23:**

Can students who are successful in the DSA-Sec request for a change of school?

### **Answer:**

Students who have been successfully allocated to a secondary school via the DSA-Sec are not allowed to transfer to another school. They are expected to honour the commitment to the allocated DSA school for the entire duration of the programme.

These students are also not allowed to opt for secondary schools during the centralised Secondary 1 Posting.

# FREQUENTLY ASKED QUESTIONS

## Result Release:

### **Question 24:**

What should I do if my child is unsuccessful in the DSA-Sec? Can I still select the school again during the centralised Secondary 1 Posting?

### **Answer:**

If your child is unsuccessful in the DSA-Sec, you will be notified during the release of the PSLE results. Your child will participate in the centralised Secondary 1 Posting to opt for schools.

You may still opt for the schools that your child has applied to during the DSA-Sec (*except for Specialised Independent Schools*) as only a certain percentage of places in these schools are taken up during the DSA-Sec.

# Resources

You may refer to the

**[School Website \(P6 Parents Portal\)](#)**

for the links / resources shared in the slides.

*Thank  
you*

